

# Biotinylated Human EPHA2 Protein; His-Avi Tag

## Product Information

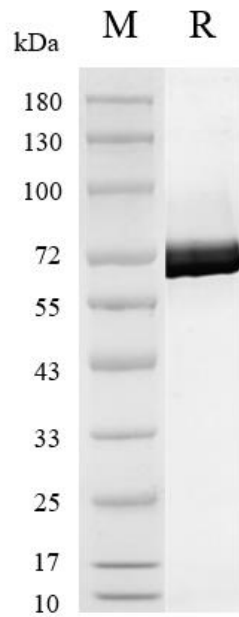
<b>Product Name</b>	Biotinylated Human EPHA2 Protein; His-Avi Tag
<b>Storage temp.</b>	Store at $\leq -70^{\circ}\text{C}$ , stable for 6 months after receipt. Recommend to aliquot the protein into smaller quantities for optimal storage. Please minimize freeze-thaw cycles.
<b>Catalog# / Size</b>	<b>GM-87626RP-25 / 25 <math>\mu\text{g}</math></b> <b>GM-87626RP-200 / 200 <math>\mu\text{g}</math></b>

## Protein Information

<b>Alternative Names</b>	EphA2, EPH receptor A2, ARCC2, CTPA, CTPP1, CTRCT6, ECK
<b>Source</b>	Biotinylated Human EPHA2 Protein; His-Avi Tag (GM-87626RP) is expressed from human 293 cells (HEK-293). It contains AA Ala24-Asn534 (Accession # P29317). This protein carries a His-Avi tag at the C-terminus.
<b>Purity</b>	> 95% as determined by SDS-PAGE
<b>Endotoxin</b>	< 1 EU/ $\mu\text{g}$ , determined by LAL gel clotting assay
<b>Predicted Mol Mass</b>	58.7 KDa
<b>Formulation</b>	Supplied as a 0.2 $\mu\text{m}$ filtered solution of PBS, pH7.4.
<b>Description</b>	<p>EphA2 protein (Ephrin type-A receptor 2) is a receptor tyrosine kinase belonging to the Eph receptor family. This protein plays an important role in cell adhesion, cell migration, cell proliferation, and cell-cell communication by interacting with its ligands, ephrin-A molecules, between cells and cell-cell interactions.</p> <p>EphA2 protein is involved in important processes during development, including neuronal migration, synapse formation, and cell-cell interactions. In adult cells, EphA2 protein is widely recognized to be closely associated with the occurrence and progression of cancer. It can regulate the proliferation, invasion, and metastasis of tumor cells, promote angiogenesis, and thus impact tumor growth and malignant transformation.</p> <p>Abnormal expression of EphA2 protein is closely related to the occurrence and development of various tumors, such as breast cancer, lung cancer, and prostate cancer. Therefore, studying the role of EphA2 protein in cancer, exploring its potential as a therapeutic target for cancer treatment, has become a hot topic in cancer research field.</p>

Version:3.3 Revision Date:25/12/2023

## SDS-PAGE

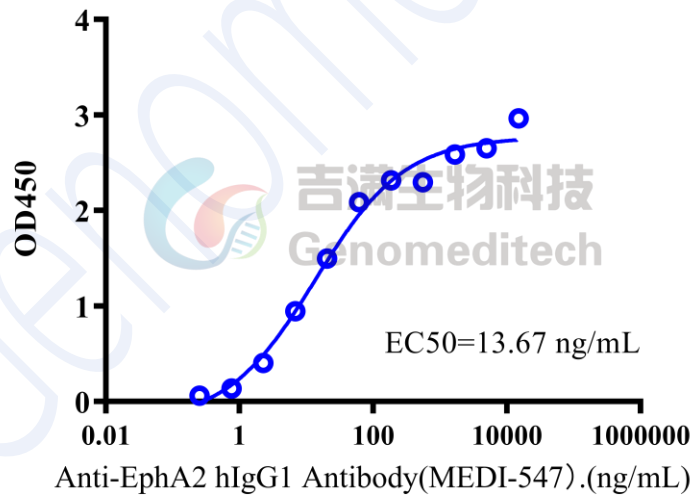


On SDS-PAGE under reducing (R) condition. The gel was stained overnight with Coomassie Blue. The purity of the protein is greater than 95%.

## Bioactivity-ELISA

### Bioactivity-ELISA

0.1  $\mu\text{g}$  Biotinylated Human EPHA2 Protein; His-Avi Tag of per well



Biotinylated Human EPHA2 Protein; His-Avi Tag (Catalog # GM-87626RP) was immobilized at 1  $\mu\text{g}/\text{ml}$  (100  $\mu\text{L}/\text{well}$ ) on streptavidin precoated. Increasing concentrations of Anti-EphA2 hIgG1 Antibody (MEDI-547) (Catalog # GM-87695AB) were added.